



**We Make
Wicked
Awesome
Golf Discs.**

INNOVA™
DISC GOLF
PDGA Approved Golf Disc ~ www.innovadiscs.com

Long time supporters of New England Disc Golf

Contents

THE EDITOR'S SPIN	4
The States of Disc Golf	6
NEFA Thank You's	13
NEFA Historical Highlights	16
Earl Cup 2006	20
Signature Hole	22
Earl Cup 2006 - Results	24
NEFA Leagues	25
Course Challenge	29
Tully Lake Dam Update	31
NEFA Board of Directors	33
NEFA Crossword	34
NEFA Results	36
NEFA Disc Golf Courses	40
Current NEFA Points Standings	42
Upcoming Events	43

THE EDITOR'S SPIN



When my eyes were opened to the sport of disc golf 3 years ago, little did I know just how much influence it would have on my life today. My first discs were the #2 Upshot and a Red Wolf mid range. I headed out to Burgess Park on Cape Cod with a couple of friends and we played our first round. The only negative thought in my mind after the round was "why didn't I discover this sport a long time ago?" Since that day, I've traveled to just about every course in Massachusetts and a few in Connecticut with imminent plans to check out courses in Maine, New Hampshire, Vermont, Rhode Island, New York and beyond. I look forward to seeing each new course with the same fervor and enthusiasm as a child going to a new amusement park

2006 has been a year of impressive regional growth for disc golf in New England. As each month passes, I hear of new course proposals (Devens, Tolland, Wompatuck, Tyngsboro) as well as significant improvements to existing courses (Borderland, Wickham, Tully Lake). Disc golf has also gained significant exposure in the national media. The USA Network had a terrific piece on disc golf during the airing of the U.S. PGA Open Tour with the sounds of Lenny Kravitz' "I Wanna Fly Away" playing in the background. Tim Gill (Disc Golf TV) gained a spot on ESPN2's morning talk show Cold Pizza where he gave a brief history of the sport, how the game is played and its potential for serious growth. Both pieces involved the use of a practice basket with live demonstrations. There was even a brief scene in the weekly television drama, "Numbers" that showed the main characters playing a round of disc golf.

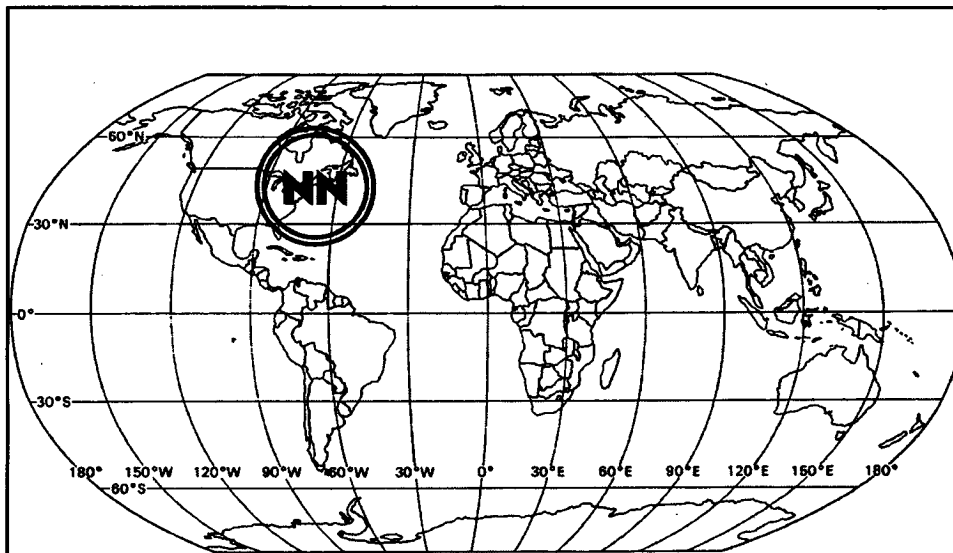


With rapid growth comes an increased awareness as to where our sport is headed. Do we try to stick with the grass roots attitude and approach that made disc golf what it is today? or do we jump on the promotional bandwagon to help our sport increase its national (and international) exposure and appeal? Ideally, you'd want to have a combination of both: A grass-roots, blue collar work ethic with an eye towards responsible growth in the future. It is not too difficult to imagine more courses becoming pay to play or implementing yearly membership programs in an effort to make it more economically viable for owners. As popularity rises, so too does the sheer number of players and this has to weigh heavy on the minds of private course owners and park officials who bear the primary responsibility for the welfare and stewardship of their land. Not all disc golf participants share the same attitude when it comes to responsible behavior and thus land owners and park officials must take this into account when planning to build a course.

From avid players to course owners, it is evident that we all share one common trait: An unfettered passion for our sport and this translates into smart and careful planning, detailed discussions and fantastic input from every conceivable angle. Rarely does an idea come along that isn't placed under the microscope and examined thoroughly for any flaws, defects or possible shortcomings. This analytical and critical system of input and feedback is crucial to the responsible growth of disc golf and I consider myself lucky to be a part of it.

See you out on the course!

- Andrew McManus
- NEFA News Editor



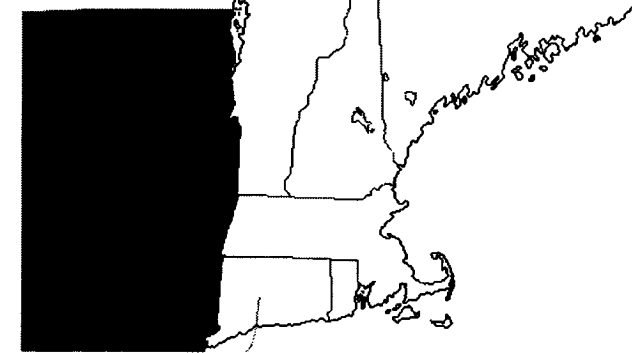
News of the NEFA

The States of Disc Golf

New York / New Jersey NEFA News

By Bill Newman

Things are shaping up for an exciting and fun summer of disc golf in the southwestern corner of NEFA land. Wolfe Woods at Warwick is near completion. Some new energy, course design ideas and several workdays have the Skylands crew excited about the emergence of this new and long awaited addition to the world class Warwick complex. Dan Doyle reports the course is fun and challenging and a fitting tribute to our old buddy and all around disc golf nut Scott W. The FDR Fools Fest tourney is just completed; a full field of 90 was awed by Steve Brinster's course record 50 (-8) on his way to a PDGA "C" victory. Look for continued course improvements and Fall doubles at FDR.



The PDGA National tour makes its only stop in the northeast for the Skylands Classic at Warwick on July 22 & 23. Look for well run and fun event featuring a field of top local, regional and national pro players. Get in touch with Dan Doyle to pre register or to sign up as a sponsor and/or volunteer. Skyland's side project Campgaw was redesigned for its winter/summer layouts, and will host its first PDGA event the, "Mighty Gaw" in May, with Scott Howard stepping up to run his first event. Morgan's Hyzer Creek course is up and running in the capitol area, a PDGA event was held there on April 15th. Volunteer opportunities are available at all the above courses. If you are interested in getting involved in taking care of our/your local courses or helping out at tournaments, feel free to get in touch. BEE WELL and see you on the fairway (hopefully).

For more info on our local events and courses, check out:
<http://www.nynjdiscgolf.com/>

Connecticut NEFA News

By Ryan Brunelle

Spring has finally arrived and in CT-land and that only means one thing: Wickham Park in Manchester, CT. On April 1 Wickham Park reopened its fairways after what seemed like an eternity of denial. For those not in the know, Wickham Park yanks her baskets and closes her doors for the winter season. Cruel, yes, but as the saying goes "absence makes the heart grow fonder". OK, that's a load a crap; let's try to make this a year round course.

In other news, Cranbury Park in Norwalk, CT has seen a much needed facelift over the past fall/winter. Local players have removed the controversial 8th and 9th holes (which were located on the dog walking paths) and have created two beautiful new holes in the adjacent woods. Alternate pin positions have been added to holes 1, 2, 3 and 7. Plans are in the works to purchase three more sleeves for alternate pin positions on 4, 5 and 6. All in all, the new changes have added approximately 800 feet to the course. Panthorn Park in Southington, CT has also seen a number of changes with the installation of new tees signs, benches and toe boards. Hero's Course in West Granby, CT continues to see major changes. Too many to list and by the time this goes to print, they will most likely have changed again. By the time all is said and done, Hero's will be yet another world class course in upstate CT.

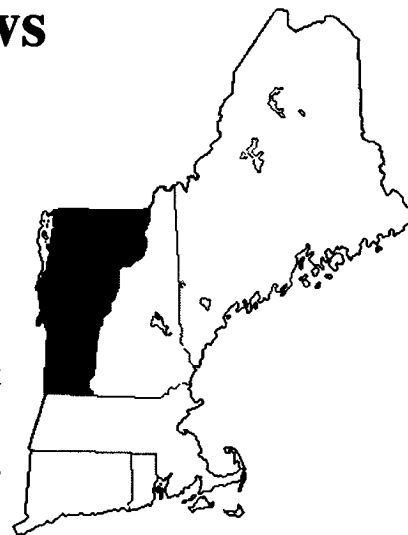
The much anticipated disc golf course at the Cross Farms Recreational Complex in Tolland, CT has finally broken ground. The course, located minutes from the world class Wickham Park course, will further strengthen the ever exploding disc golf scene along the I-84 corridor. The first nine holes have been roughly cleared and baskets will hopefully be installed by late May.



Vermont NEFA News

By Ben Parker

Let's start out with a few congratulations, starting with Matt Alberghini who, as usual, gets the lion's share. Matt tied for 50th at the 2005 USDGC and improved his score every round throughout the tournament. All of his rounds were rated over 1000 and he was only one stroke back of Jay Reading and Walt Haney. Nice job Matt, keep up the great work. Kurt Waggoner also just grabbed his first taste of Pro cash at the FDR Fools Fest. Sampson had the hair; Kurt's power resides in his beard.



The biggest news from Vermont is the formation of the Green Mountain Disc Golf Club (GMDGC). Dave Frothingham, Jesse Wing, Pete Hess and I decided that it was time to get organized, so we started a non-profit group designed to promote disc golf in VT. Wait a minute...isn't that what NEFA does? Yes, without a doubt; however, this club was established to work on the local level to build courses and promote tournaments. We have already seen an increase in respect for the sport and its participants, as well as significantly improved communication with the town of Waterbury. IRS paperwork is a pain in the rump, but there is no doubt that the GMDGC will lead to more courses, more tournaments, as well as increased awareness and respect for our sport in Vermont. We look forward to working with disc golfers, NEFA, the PDGA, and towns all across the Green Mountain State.

On the 2006 tournament front, Vermont is poised to host two NEFA events for the first time. The GMDGC will be hosting the Sap Bucket Open – MSDGC Qualifier, NEFA Double Points on Saturday, April 22, 2006 at Center Chains in Waterbury. Paul Olander will again be hosting Vermont States on Saturday, July 29, 2006. VT States will be our USDGC Qualifier and a NEFA Points event. It is great to see the sport continue to grow and I am aiming to continue to add more NEFA events to the schedule in 2007.

Last but not least, the GMDGC is actively working on proposals for more courses in Vermont. We have already made one proposal and we have several more sites that are in the works. Can you hear it? That is the sound of chains ringing all over Vermont.

Peace and nothing but love,



New England Flying disc Association

NEFA News: An Advertising Opportunity



NEFA News is the primary source of disc golf news, reviews and previews in New England Flying disc community.

400 NEFA News magazines are printed for each issue. Approximately 300 are distributed to the NEFA membership. And 100 are given to potential members and new players.

Your support of NEFA News will be greatly appreciated. And you will reap wonderful monetary and karmatic rewards.

There is also an online PDF version which is available to everyone through the NEFA website homepage (NEFA.com).

All ads are black and white. Ad copy is due to steven@msdgc.com by May 15th.

Inside cover: \$100
4 available - 8.5" tall x 5.5" wide

Full page ad: \$60
8 available - 8.5" tall x 5.5" wide

1/2 page ad: \$40
8 available - 4.25" tall x 5.5" wide

Make checks payable to "NEFA" and mail to: NEFA, PO Box 440046, Somerville, MA 02144

New NEFA News Personals
25 Words plus a From and To - \$5

Mail checks and personals to:

NEFA News Personals / PO Box 440046 / Somerville, MA 02144

All ads & personals due by November 1st, 2006

NEFA Thank You's

Dear Friend,

01/31/06

Thank you for your gift of \$475.00 to the Christopher Reeve Foundation. Your support is truly appreciated and we hope you will be gratified to know that your gift has a direct effect on the lives of those living with paralysis.

Christopher taught us how much can be accomplished when you believe. Thank you for continuing to believe in CRF's mission and for moving us closer to a cure.

Sincerely,

Kathy Lewis, President and CEO
Christopher Reeve Foundation

Dear Friend of the Red Cross,

February 1, 2006

Thank you for your gift of \$475.00 on January 26, 2006 to support our lifesaving work. We are always ready – 24 hour a day, seven days a week throughout the year. There will never be an end to our assistance – only a beginning. Our work is backed by the service of thousands of committed volunteers, who carry out our important mission, and the financial assistance of caring individuals like you.

Whether it's a hurricane, wildfire, flood, conflict situation or tragic terrorist attack, the Red Cross will be there to provide support. Thank you for supporting us.

Kind regards,

Napoleon Hendrix III
Manager, Donor Relations
American Red Cross

**AFFORDABLE
ADVERTISING**

Dear Mr. Williams,

February 17, 2006

Thank you so much for your contribution of \$475.00 to the Susan G. Komen Breast Cancer Foundation. Your support is vital in helping us work toward our goal of eradicating breast cancer as a life-threatening disease by advancing research, education, screening and treatment.

The Foundation's Award and Research Grant Program has been instrumental in funding revolutionary breast cancer research, leading to groundbreaking discoveries that improve the treatment of breast cancer and may even reduce the incidence of breast cancer in high-risk groups.

Again, I want to express my sincere appreciation for your generous donation and your belief in our mission. Because of your help, we are one step closer to finding a cure.

Sincerely,

LaSalle D. Leffall, Jr. M.D.
Chairman of the Board
The Susan G. Komen
Breast Cancer Foundation

Dear Members of New England Flying Disc Association, January 18, 2006

Canines for Disabled Kids has received the donation you made in support of our program. The contribution of \$475.00, received on January 18, 2006, will make an important difference in the life of a child. This contribution goes a long way in helping to bring more of these special teams together.

Thank you for choosing to support Canines for Disabled Kids. We look forward to working with you in the future.

Sincerely,

Kristin Law
Executive Director
Canines for Disabled Kids

Jason,

January 18, 2006

Thank you so much for the donation to CDK from the Flying Disc Association. You are really helping CDK to place more children with assistance dogs. We have sponsored over 90 since 1998 and 13 so far this season! - Kristin

Dear NEFA,

June 13, 2006

Thank you for your donation towards my eagle project. Your donation was a greatly appreciated factor towards the completion of the course. Thank you very much. - Scott Bockus

Dear NEFA,

June 26, 2006

Thank you for your recent donation of 50 discs to our school. I am a 5th and 6th grade teacher and disc golf advocate at Greenfield Center School. The Center School is a small, independent school in Western Massachusetts. Our mission is to provide students with a healthy balance of social opportunities, which support their academic pursuits. As part of our physical education program, disc golf has been the perfect option for students who want to participate in sports for social and kinesthetic reasons, but shy away from highly competitive, large group sports like soccer and ultimate Frisbee. Disc golf combines physical strength, muscle control and throwing skill, and teaches students to take turns and be aware of their surroundings (a.k.a. flying discs).

Thanks to your donation of discs, many of them very suitable to kids (putters, mid-range fliers) we will be able to complete our 9-hole course and offer the game to many students. In addition, we are planning to hold tournaments for junior disc golfers once our course is finished. NEFA's name will be proudly recognized at these tournaments, and we may be contacting you in the future to ask for continued sponsorship for these events. Thank you,

Chris Sanborn
5/6 Classroom Teacher
Greenfield Center School
71 Montague City Road
Greenfield, MA 01301
(413) 773-1700

NEFA Historical Highlights

Part I, The Early Years
by Steve Hartwell

The idea for a regional organization was hatched by Edwin "Stick" Dissoss-way, Theo "Sunny" Cade and others in the late 1980s, to unify various groups of frisbee players in Boston, central Massachusetts and Connecticut. A central mailing list was appealing, as well as strength in numbers, and a desire by all to increase play and grow the tournament scene in New England, especially disc golf. The acronym NEFA sounded just right for the newly formed New England Frisbee Association (it was later changed to "Flying Disc" with a potential Wham-O lawsuit pending), and the first NEFA officers were Steve Hartwell, President; Rick Willams, Vice President; Theo "Sunny" Cade, Secretary; Jason Southwick, Database Manager; and Toddy Brodeur, Treasurer. Dues were set at \$10, with a special juniors rate of \$3.50 for those 16 and under.



A scenic water hole at Bird Park

In the 1980s, there were only a handful of disc golf courses with permanent poleholes in New England. Steve & Joy Hartwell used to drive 2.5 hours from North Reading to play an occasional \$3 round at the Oak 'n Spruce Resort in South Lee, MA. During one visit, they discovered that the course was being dismantled to make room for more condos; they went back and raised \$600 to buy the 18 poleholes and signs outright. With the help of Greg Black and a Ryder truck, they hauled the metal back to Greg's house for safekeeping. NEFA tournament directors then used the hardware for temporary courses for tournaments. In Massachusetts, Bird Park in Walpole, and Borderland State Park in Sharon were popular venues, and T.M. Dyer hosted many a great event at Miantanomi Park in Newport, Rhode Island. It was hard work to host a disc golf tournament this way, with trailers needed to haul the baskets (NEFA would

FLAT FLIP FLIES STRAIGHT!

True Origins of the Frisbee®

"All other Frisbee books pale in comparison!" — JIM PALMERI, PDGA #23

At Last...Fred Morrison Speaks Out!

"Frisbee History has been horribly botched; nobody ever gets it right...and I'm the subject of some cheap shots!"

Written by The Grandpappy of All Plastic Discs in his entertaining blend of sharp insight & dry wit, this is the first & ONLY book to "Get It Right!"

- It was a popcorn can lid...NOT a pie tin!
- What did "PIPCO" really mean?
- Who was Fred's OTHER partner?

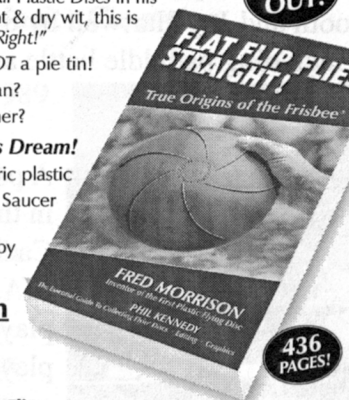
Part Two—A Disc Collector's Dream!

- 100 candy-color pics of historic plastic
- Learn to identify EVERY Flyin Saucer and Pluto Platter ever made!
- Tons of helpful tips & advice by Phil Kennedy—NEFA #11.

www.FlatFlip.com

Wormhole
PUBLISHERS

E: FlatFlip@cox.net • www.FlatFlip.com

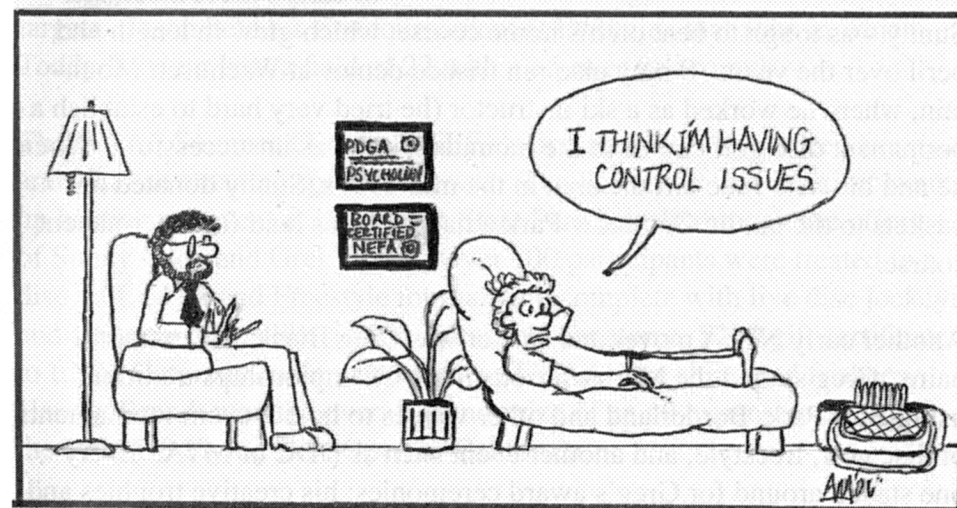


**SPECIAL
NEFA
DEAL!**

NOW, get a great book and help NEFA, too!

When you place your order from us on line, mention this ad and we will donate 2 bucks to NEFA!

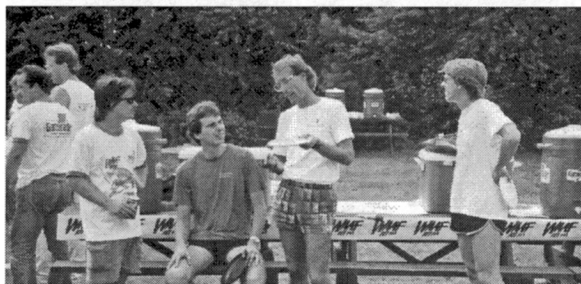
GRIPLOCK



DISC - THERAPY

eventually buy a trailer which was maintained by T.M.) and a crew needed to plant the poleholes in the morning and take them down in the evening.

The first NEFA-sponsored event was the "Dave Johnson is Getting Married" tournament on Saturday, June 25, 1988, two rounds of 18 holes of disc golf at Bird Park in Walpole, MA. 44 people attended, including 6 women. In Open, Joe "Lick Me" Proud was victorious over D.J. by 10 strokes (but he got married anyway), and in the Women's division, Lick's wife Mary beat Tina Booth and Joy Hartwell by 8 strokes. Several other events were contested, including paddiddle battle and grape TRC, but unfortunately the results are not known.



A masterful Harvey Brandt at the WAAF Summer Fling

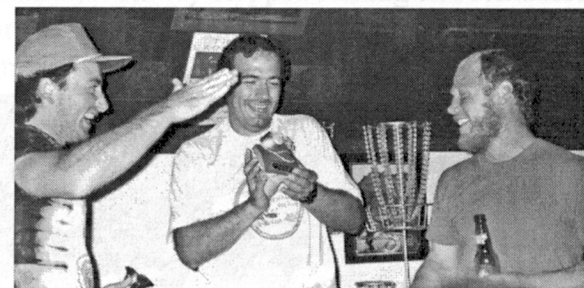
Sunny was tough to beat on his home course, which grew in length and peril over the years. Sunny also ran frisbee demos at Wachusett Mountain, where he worked as a ski instructor (he tried very hard to establish a permanent disc golf course at the mountain, but was unsuccessful). When he and his wife Jude left the area in the mid-1990s, Sunny donated his baskets to the public Goodnow Park adjacent to his land for a permanent course.

Another early NEFA mover and shaker was Greg Black, TD extraordinaire. Greg started the Massachusetts State Championships tradition, using Bird Park, Borderland and other venues to host 3-event tournaments of disc golf, freestyle, and another event such as DDC or MTA. Everyone stayed around for Greg's award ceremonies; his creative trophies and emcee ability were unmatched.

A popular NEFA hangout in those days was Sunny Cade's house in Princeton, MA. He welcomed disc players young and old to play his hilly backyard course on homemade baskets, and his living room, with a picture window view of the course, was the site of early NEFA meetings.

The NEFA News began publication in 1988 as the front and back side of one sheet of paper. Stick Dissosway, Steve & Joy Hartwell and Sunny Cade all had stints at editing those early classics. Issues 5 thru 8 were fabulous in layout and design, as they were produced by graphic artist Alan Caplin, Rick Williams' freestyle partner. A popular ad that appeared in many early NEFA News' trumpeted "Who Says Frisbee Champions Don't Come From New England?" and then listing Jim Herrick from Wellesley, MA as the 1988 U.S. Open winner and Shawn Kennedy, son of Phil, as the 1988 World Junior Champion

A memorable event of 1989 was Jason Southwick's birthing of the Pyramids disc golf course in his parents' back yard. Jason named his course from the affinity he had developed for unpaid Egyptian laborers, but his work was rewarded with a scenic masterpiece of tree-filled terror on 25 acres. In its beginnings, the course had eight borrowed NEFA poleholes, eight taped tree targets, a ceramic chimney liner and an accuracy hoop (on the longest hole of 395 feet) for targets. Jason held his first tournament at Pyramids that June in which Toddy Brodeur beat a field of 22 with a +5 over two rounds.



A Greg Black awards ceremony

The WAAF Summer Fling was NEFA's first foray into sponsored events, and what an amazing spectacle it was. The Worcester radio station wound up hosting the event at Hopkinton State Park largely through the efforts of Sunny Cade and Greg Black. Over 100 participants were treated to a disc golf, MTA and Freestyle tournament, complete with live disc jockeys and amazing prizes like a \$600 Panasonic car stereo, \$200 gift certificates to EMS, Gatorade coolers and plenty of WAAF tee shirts and frisbees. Harvey Brandt won the overall grand prize of an all expense paid trip to the 1990 US Flying Disc Open in California.

If someone winds me up again, I can expound upon the Later Early NEFA Years, but for now, we'll end this 15+ year-old chapter of NEFA history.

Earl Cup 2006

by John Hart

On June 24th, the Earl Cup was held on the Beast Course at Enman Field, Brunswick Maine. The Earl Cup is a yearly event that pits the best of NEFA against the best of Maine including a few out-of-state Maine regulars. Created by Bob Enman 10 years ago in honor of his father Earl, it has become the Ryder Cup of New England Disc Golf. The teams consist of 12 players and the format is 3 rounds of match play in one day.



Team NEFA and The Pilots of Maine
2006 Earl Cup

NEFA has held a decisive edge the last few years, but this year shaped up to be a little different with top players on both sides unable to make it. This year's teams turned out to be much more diverse with a mix of just about all divisions being represented. After some last minute scrambling NEFA showed up Saturday morning at Enman Field with a full team raring to go, on what was expected to a rain filled day.

The pairings were matched up back and forth between John Hart & Bob Enman, and the groups were sent out from hole 1 to begin the day. Playing through just some light rain at first, it slowly stopped raining and remained overcast but relatively dry for the remainder of the day. As the first round ended and groups were coming in off of 17 & 18, it was apparent that each team had some victories. After the first round it was 3 1/2 for the Pilots of Maine and 2 1/2 for NEFA.

A great lunch of Maine crabmeat, clam chowder, burgers, beer and other compliments were served up by our host Bob Enman. Then it was out for round 2 and with a few tweaks to the teams, the pairings were matched up again and we were off. As we came in from the hard fought second round, it slowly became apparent that team NEFA was in trouble. The Pilots nearly shut us out, with only the team of Norm Fitzgerald and Todd Lapham pulling out a tie for half a point. The totals after 2 rounds were 9 for the Pilots of Maine and 3 for NEFA.

The bar had been set and team NEFA knew we had to pull out 9 of the 12 matches to just pull even and hold onto the Cup. Players names were thrown out and matched up and we started out on hole 1. In the final round, the Maine Pilots proved to be more consistent and showed better play. In the end, it was the Maine team gaining 9 points in the singles round, and leaving no doubt about their win. Final score: 18-6, Maine Pilots take it. Scott Mallar, Derek Libby and Mike Connell went a perfect 3-0 for the day. Congrats to the Maine team, but we'll get it back next year when it's our turn to host the event.

Signature Hole Series

We want you! To nominate a picture of your favorite golf hole. This episode's decision was easy because no one knew about the contest, and Steve Dodge just snuck this gorgeous picture of Maple Hill Elements' Hole 4.

This is a 234 foot shot with an elevation drop of about 35 feet. The fairway is about 6 to 10 feet wide. A putter will reach it with a nice easy glide. Or you could just throw a driver as hard as you can (Jason Johnson) and just pray that you aren't accurate (you hit a tree that saves your shot from the pond behind.)

Birdies are common on this tricky par 5. As are double bogeys. Just ask Kevin McCoy. He lost three strokes here at the 2005 MSDGC.

To nominate a hole for the Signature Hole Series, simply email 2 things to John Hart: JCEKHART@aol.com

1. one or two 300 dpi photo(s) of the hole.
2. a fun description of the hole

We will pick the best nominee and include it in the next issue. Submissions must be sent to John by October 15th.

Signature Hole Series - August 2006
Maple Hill Elements' Hole 4



Earl Cup 2006 - Results

June 24 - Beast

Round 1

Sean Franchi/Mike Laterreur (NEFA) over Bob Enman/Jake Jacobs (Pilots)
Kyle Enman/Marielle Powell (Pilots) tied Doug Bechtel/Norm Fitzgerald (NEFA)
Josh Connell/Gary Ellsworth (Pilots) over Jerel Davis/Tim Jiardini (NEFA)
Jason Johnson/John Hart (NEFA) over Kieran Nichols/Drew Smith (Pilots)
Scott Mallar/Derek Libby (Pilots) over Joe Yaskis/Todd Lapham (NEFA)
Mike Connell/Tyler Cass (Pilots) over Shaun LaForce/Dave Kurtz (NEFA)

Score = Pilots 3.5, NEFA 2.5

Round 2

Drew Smith/Jake Jacobs (Pilots) over Dave Kurtz/Doug Bechtel (NEFA)
Bob Enman/Derek Libby (Pilots) over Sean Franchi/Mike Laterreur (NEFA)
Mike Connell/Tyler Cass (Pilots) over Joe Yaskis/Shawn LaForce (NEFA)
Kyle Enman/Marielle Powell (Pilots) over Jerel Davis/Tim Jiardini (NEFA)
Scott Mallar/Kieran Nichols (Pilots) over Jason Johnson/John Hart (NEFA)
Josh Connell/Gary Ellsworth (Pilots) tied Norm Fitzgerald/Todd Lapham (NEFA)

Score = Pilots 9, NEFA 3

Round 3

Jake Jacobs (Pilots) tied Sean Franchi (NEFA)
Drew Smith (Pilots) over John Hart (NEFA)
Todd Lapham (NEFA) over Tyler Cass (Pilots)
Bob Enman (Pilots) over Mike Laterreur (NEFA)
Mike Connell (Pilots) over Tim Jiardini (NEFA)
Gary Ellsworth (Pilots) over Shaun LaForce (NEFA)
Doug Bechtel (NEFA) over Marielle Powell (Pilots)
Josh Connell (Pilots) tied Dave Kurtz (NEFA)
Scott Mallar (Pilots) over Norm Fitzgerald (NEFA)
Derek Libby (Pilots) over Joe Yaskis (NEFA)
Kieran Nichols (Pilots) over Jerel Davis (NEFA)
Kyle Enman (Pilots) over Jason Johnson (NEFA)

Final Score = Pilots 18, NEFA 6

River City Sign

DISCSIGNS

★ UV STABILIZED

★ RESISTS GRAFFITI

★ IMPACT RESISTANT

★ THEME DESIGNS

LIFETIME GUARANTEE

Call for Free Brochure and Sample

800-437-3296

see us on the internet at www.rivercitysign.com

NEFA Leagues

Most leagues occur from early spring to mid fall, please contact league organizers to confirm dates and times. Email new or corrected info to amcmanus@ci.mashpee.ma.us

Connecticut

CRANBURY PARK, Norwalk, CT

WHEN: Thursdays @ 5:00 p.m.

FORMAT: Random draw, best disc: \$7 (\$5 payout, \$1 ace, \$1 course fund)

CONTACT: Ryan Brunelle- 203.247.1668

PANTHORN PARK, Southington, CT

WHEN: Thursdays @ 5pm

FORMAT: Doubles - \$7/person (\$2 ace pot/ \$5 payout)

CONTACT: Joe "lick me" Proud - 860.637.1000

WICKHAM PARK, Manchester, CT

WHEN: Tuesday Singles @ 5:30 and Sunday Doubles @ 10:45

FORMAT: Tag league

CONTACT: Stephen Ditter (www.ctdiscgolf.org)

Maine

QUAKER HILL FARM, Fairfield, ME

WHEN: Tuesdays @ 6 p.m.

FORMAT: Singles league \$8 to get in \$1 optional ace pot, \$1 optional c.t.p. pot. Varied themes such as driver only, putter only, 3 discs, 2 discs, or 1 disc only

CONTACT: Ralph Pilsbury (www.mainediscgolf.com)

Massachusetts

AMESBURY PINES, Amesbury, MA

WHEN: Tuesdays @ 5:00 p.m.

FORMAT: E-Tags (see website for details)

CONTACT: www.amesburypines.com

BORDERLAND STATE PARK, Sharon, MA

WHEN: Thursdays @ 4:30 p.m. sharp, by the practice basket

FORMAT: Creative, varied and fun league (singles, handicapped doubles, random draw and much more). \$6 to play (\$4 to the payout, \$1 to the course, and \$1 to league) and there is also an optional \$1 ace pot. Season-long points series and CTP prizes. Points competitions (longest drive, approach and putt contests start @ 4:00 p.m.)

CONTACT: www.borderlanddiscgolf.com

BUFFUMVILLE LAKE, Charlton, MA

WHEN: Fridays @ 5:00 p.m. / Sunday Hat Doubles @ 10 a.m.

FORMAT: Handicap doubles: \$6 dollars to play (\$ 5 dollars for payouts \$1 dollar ctp). Wednsdays @ 5:00 p.m. varied formats (\$5 to play)

CONTACT: www.buffumvillediscgolf.org

BURGESS PARK, Marstons Mills, Cape Cod, MA

WHEN: Wednesdays @ 5:30 main parking lot

FORMAT: Equalizer League: front 9 singles, back 9 equalizer doubles (high/low score pair-ups). .50 optional Ace pot

CONTACT: <http://capedcod.home.comcast.net/> - Lev Malakhoff

MAPLE HILL, Leicester, MA

WHEN: Tuesdays @ 5:15 p.m.

FORMAT: Handicapped Singles (groups determined @ 5:00 p.m.) \$7 - (\$5 to the pot, \$1 to the ace pot (starts @ \$50), and \$1 to the course)

CONTACT: steven@marshallstreetdiscgolf.com

PYE BROOK, Topsfield, MA

WHEN: Sundays Doubles @ 9 a.m. (Doubles league) and Friday Social Rounds @ 5:00 p.m.

FORMAT: Sunday league: Random Draw Doubles (no fee). Friday Social - see website

CONTACT: www.pyebrookdiscgolf.com

RIVERHEAD FIELD, Oak Bluffs, Martha's Vineyard State Forest, MA

WHEN: Sundays @ 10:00 a.m and Tuesdays @ 5:00 p.m.

FORMAT: Varied (winners sign the trophy)

CONTACT: Jake Gifford (508)-939-9005

New York

WARWICK TOWN PARK, Warwick, NY

WHEN: Tuesdays @ 6:00 p.m. sharp

FORMAT: Random draw, A & B pools determined at start time. \$4 entry, optional \$1 ace pot (capped at \$250) Non members pay \$1.00 course maintenance fee (league open to everyone). We will be switching up between Animal and Wolfe courses.

LADIES MONTHLY CLINICS: Sundays @ 1:00 p.m.

CONTACT: <http://www.nynjdiscgolf.com/>

New Jersey

BUZZY'S CREEK, West Milford, NJ

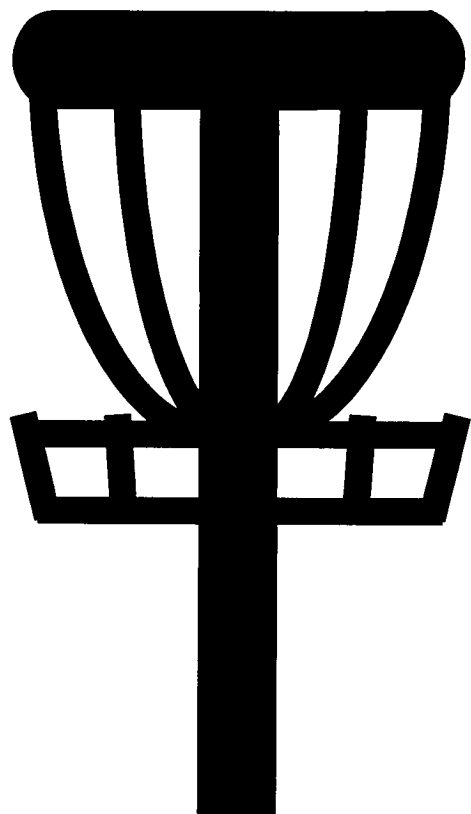
WHEN: Thursdays @ 6:00 p.m. sharp

FORMAT: Random draw doubles (A&B pools). \$4 entry fee, optional \$1 ace pot (capped at \$250). Non-members pay \$1 for course maintenance fee (everyone welcome)

CONTACT: <http://www.nynjdiscgolf.com/>

Fun time. Complete the phrases.

Marshall _____



_____ baby!

This is a paid advertisement. Don't get suckered in to thinking NEFA put this here.

Course Challenge

Throw Down the Gauntlet!

It started on the NEFA Discussion page as an idea by Joe Yaskis and it didn't take long before the idea became a reality. A course vs course challenge whereby any course in NEFAland is invited to form a team of their best players and compete against teams from other courses. The proposition drew swift and enthusiastic feedback online, and soon after, an official Team Challenge meeting was organized last September at the Pyramids DGC to discuss the details. Representatives from 6 courses (Maple Hill, Buffumville, Burgess, Borderlands, Wickham Park and Pye Brook) attended the meeting and proceeded to hash things out. Each course rep drew random numbered tags from a bag to establish team rankings and rules were presented for discussion. After the random tag draw, the rankings for the first season were set: (1) Wickham Park, (2) Buffumville DGC, (3) Borderland State Park, (4) Burgess Park, (5) Pye Brook DGC, (6) Maple Hill DGC.

The ground rules are as follows: Each participating course can have up to 10 players on their roster, 6 of whom are eligible to play on challenge days (it was agreed that Sundays would be ideal for all challenges). A \$100 entry fee is required for each participating team (\$10 per player) and this money goes towards a season ending party and Team Challenge trophy (the nature of which has not yet been decided). The challenge format consists of 2 rounds (first round singles match play-1 point each and second round best disc doubles - 2 points each). The team with the highest number of points at the end of the day wins the challenge. Ties are settled with either a CTP throwoff or extra holes are played until a winner is established. Teams must accept and/or issue at least one challenge per month and the team with the higher ranking always plays host. If the host team loses, they switch tags with the visiting team, and if the host team wins, the tags stay the same.

Once the official rules were posted on nefa.com, it didn't take long for the challenges to start popping up. The first round had Borderland hosting Pye Brook, Burgess hosting Maple Hill and Wickham hosting Buffumville. The challenges in week one were very tight, yet after all was said and done, the home teams made a clean sweep to defend their respective courses. A deluge of friendly and not so friendly internet smack

talk preceded the second round of challenges, coupled with heated debate over some rules of play and overall challenge format. Suggestions for rule changes poured in and many valid points were made; however, it was decided that we would stick with the rules already agreed upon from the meeting and play out the season as a trial run.

As expected, the home teams dominated early on, until team Buffumville broke the visiting team losing streak by taking out #1 team Wickham at Panthorn Park (Wickham's alternate winter home course). A couple of months after losing their #1 status, team Wick showed some serious resolve and reclaimed the #1 tag by defeating Buffumville on the road. While these road wins gave the rest of us hope, the majority of challenges thus far have gone in favor of the home team. Home course advantage is a tough thing to overcome if you're the visiting team, but comfort should be taken in the knowledge that thus far in the Team Challenge, teams have pulled it off on the road and there's still plenty of time left before the first season comes to an end in Sept.06.

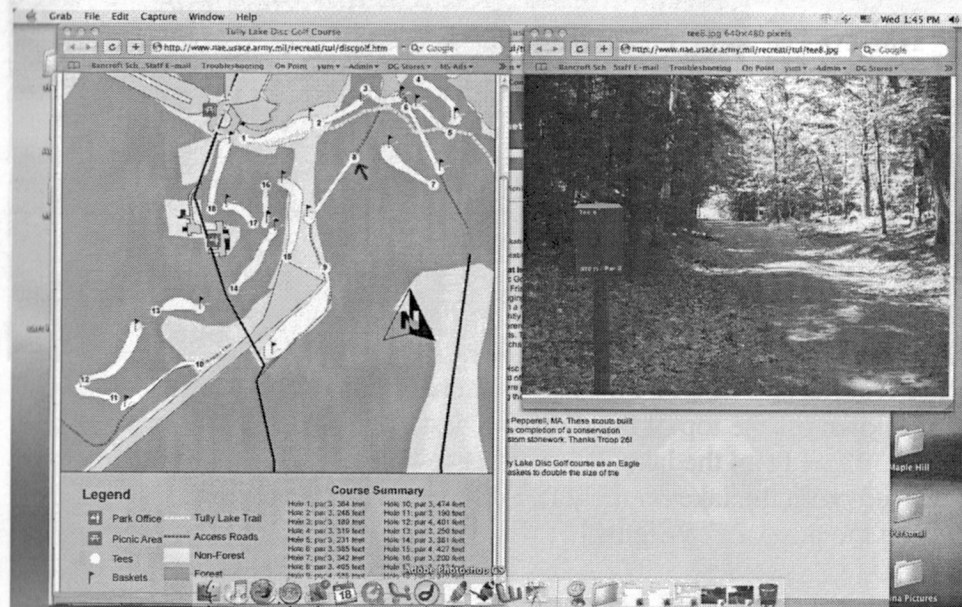
Despite some of the shortcomings and scheduling issues that have arisen out of this inaugural Team Challenge season, it has some serious potential to take off. A palpable sense of camaraderie and enthusiasm is growing amongst the participants before and after each challenge. Displays of hospitality abound: Team Borderland had a BBQ cookout lunch between rounds when they hosted Pye Brook. Team Wickham showed Team Burgess the meaning of hospitality when they hosted us at Panthorn with coffee and doughnuts in the morning and a fine selection of microbrews throughout the day. Detailed challenge results are posted on nefa.com, usually the next day. The spirit of the Team Challenge is highly competitive, but the name of the game is fun.

Many suggestions have been made on how to improve next year's Team Challenge to enhance competitive play and make it more inclusive. The establishment of regional divisions could help to cut down on driving times, which subsequently, may induce more teams to formulate and join up. Rankings based on season ending win/loss records instead of random tags; a minimum of at least one home game and one away game for each participating team, to level the playing field. In my humble opinion, the greatest aspect of the Team Challenge is the plethora of ideas and suggestions brought about by the participants themselves...without constant input and feedback; it's still just an idea waiting to become a reality. So gather up your mates, form a team and throw down the gauntlet!

Tully Lake Dam Update

The Tully Lake Disc Golf Course is another New England course located on an Army Corps of Engineers (ACOE) dam project site. It is located in the extremely rural town of Royalston in north central Massachusetts, just north of Athol on Route 32.

The course was initially established back in 2004, when Andy Bockus designed and installed 9 holes as part of his Boy Scout Eagle Project with the assistance of the ACOE Rangers at Tully Lake. The course has had some local play over the last 2 years, but a move to 18 holes was sure to bring more interest. Early this summer that move was made when Andy's brother Scott took on the second 9 as part of his Eagle Scout project. The course is now a 5943 foot 18 hole course with all the Innova Disc-Catcher baskets and nice tee signs.



A clickable online course map lets you get a feel for how the course will play. There is also a PDF scorecard so you can predict how well you'll do.

<http://www.nae.usace.army.mil/recreati/tul/tulrec12.htm>

continued next page

This entire Disc Golf Project at Tully Lake has also been largely due to the efforts of the ACOE and James West in particular. The rangers at Tully Lake have been behind the project all the way and have done a great job working with the Boy Scouts in regards to design, construction and on going promotion and maintenance. They deserve our thanks. NEFA did sponsor this course \$400 to aid in the purchase of the Disc-Catcher baskets.

The expansion to 18 holes utilized the entire existing 9 holes, with the only alteration to date being the relocation of the old #6 tee, now #15. Eight of the new nine holes are located in the woods. The lone non wooded hole is a great par 4 which starts at the base of the spillway with your tee shot going up over the spillway wall and fence to a flat fairway. The second shot will require you to navigate a couple large evergreens down the fairway to the basket.



nal 9 features a wide variety of shots including a few open holes. Hole #1 plays down off the top of the dam to a basket located 364 feet away and about 30 feet from the lake. It is similar to hole 16 at Buffumville, only reversed, with the lake on the left. Scorecards can generally be found in a box on the post of Tee Sign #1.

The other new holes are a good mix of wooded fairways with varying lengths and elevation changes, including a variety of right, left and straight holes. Four of the new holes are located on the west side of Route 32. All in all, it is a very challenging course that plays well, but does need some work as all new courses do. Keep an eye out for work days and play days as this course evolves. Thanks to all those that have contributed to this courses development to date.

NEFA Board of Directors

ELECTED OFFICERS

John Hart	President	978-249-2065
Joe Lick Me Proud	Vice President	860-676-4348
Rick Williams	Administrator/Treasurer	617-666-5936

VOLUNTEERS

Stephen A Hartwell	Database Manager	978-664-2888
Josh Connell	Web Manager	207-577-4279
Ric Timmons	NEFA Discs For Kids	802-234-6802
Marielle Powell	Women's Rep	617 283 4060
Steve Dodge	NEFA Graphic Artist	508-421-6621
Andrew McManus	Newsletter Editor	508-367-8025
Ryan Turncliff	NEFA Points Data	508-309-3234
Jason Southwick	NEFA Points Committee	508-867-9495
Bill MacWilliams	Honorary	508-792-2764
Kraig Steffen	Honorary	

STATE REPRESENTATIVES

Ryan Brunelle	CT State Rep	203-452-5998
Gary Cyr	MA State Rep	508-479-0134
Bob Enman	ME State Rep	207-729-5215
Chris 'Tex' Long	NH State Rep	603-473-2812
Bill Newman	NY State Rep	914-864-2235
Rich Fenton	RI State Rep	
Ben Parker	VT State Rep	802-233-7741



[illegible]

34

NEFA Results

3/4/06		Mt Kisco Ice Bowl.			
Pro Open	RI	R2	Total	Prize	
Tim Walsh	58	57	115	\$140	
Adam Goodman	62	60	122	\$70	
Craig Cutler	62	62	124	\$50	
Pro Masters					
Dave Jones	60	60	120	\$100	
Dave Coates	63	65	128	\$50	
Bill Newman	67	63	130	\$30	
Advanced Women					
Jen Pedham	82	84	166	Merch.	
Courtney Eudaly	95	103	198	Merch.	
Advanced Men					
Jessie Carrieri	64	67	131	Merch.	
Adam McGahey	68	65	133	Merch.	
Steve Van	71	63	134	Merch.	
Advanced Masters					
Mark Lyons	64	66	130	Merch.	
Ken Dawson	69	64	133	Merch.	
Tim Smith	70	65	135	Merch.	
AM2					
Conrad Aamodt	71	72	143	Merch	
Brian Cummings	74	70	144	Merch	
Mike Barone	77	74	151	Merch	

3/25/06		Vineyard Social II			
Pro Open	Blue	Wht	Total	Prize	
Tim Walsh	60	53	113	\$150	
Pete Johnson	60	55	115	\$100	
John Tate	64	60	124	\$40	
Pro Masters					
Rick Belhumeur	71	53	124		
AM1					
Eric Kaplan	65	57	122	PRIZE	
Aaron Ala	65	57	122	PRIZE	
John Tserpes	66	58	124	PRIZE	
Adv Masters					
J.C. Vermynck	71	60	131	PRIZE	
Mike Connolly	74	62	136	PRIZE	
Dan Kaeka	74	62	136	PRIZE	
Adv Women					
Michelle Branch	67	68	135		
Kelley Southwick	79	77	156		
Amy Vanneman	86	86	172		
AM2					
Arthur Graustein	67	60	127	PRIZE	
Mark Moge	70	59	129	PRIZE	
Brian Cummings	73	65	138	PRIZE	

3/18/06		Beast Championships			
Pro Open	RI	R2	Total	Prize	
Daryl Cormier	57	54	111	\$125	
Kyle Enman	56	55	111	decline	
Tim Walsh	55	58	113	\$75	
Pro Masters					
Gordy Adell	61	62	123	\$25	
AM1					
Gary Ellsworth	61	63	124	Trophy	
Sheldon Hyde	63	62	125	Trophy	
Tyler Cass	65	60	125	Trophy	
Adv Masters					
Mike Connell	61	63	124	Trophy	
David Leary	60	67	127	Trophy	
Bob Enman	67	70	137	Trophy	
AM2					
Sean Stanton	65	60	125	Trophy	
Marielle Powell	66	66	132	Trophy	
Ben Dunlap	63	69	132	Trophy	
Recreational					
Bill Parker	93	90	183		

4/1/06		FDR Fool's Fest			
Pro Open	RI	R2	Total	Prize	
Steve Brinster	50	53	103	\$180	
Daniel Marcus	53	55	108	\$105	
Will Kriewald	53	56	108	\$105	
Pro Women					
Lesli Demark	62	67	129	\$30	
Pro Masters					
Dave Jones	56	60	116	\$90	
Tim Jiardini	56	61	117	\$60	
Bill Newman	59	59	118	\$45	
AM1					
Derek Libby	56	59	115	Merch	
Stephen Ditter	59	59	118	Merch	
Harry Brown	57	61	118	Merch.	
AM Women					
Jeannie Helseth	71	77	148	Merch	
Jen Pedham	76	75	151	Merch	
Laura Wanderling	82	85	164	Merch	
Adv Masters					
John Hart	61	59	120	Merch	
Matt Jackson	64	60	124	Merch	
Tim Smith	61	63	124	Merch	
AM2					
Sean Healy	63	62	125	Merch	
Fred Doot	62	67	129	Merch	
Craig Smolin	66	64	130	Merch	

4/8/06		Beauty Championships			
Pro Open	RI	R2	Total	Prize	
Mike Dussault	54	58	112	\$125	
Josh Connell	53	60	113	\$80	
Daryl Cormier	59	56	115	\$50	
Scott Mallar	56	59	115	\$50	
Pro Masters					
Gordy Adell	58	59	117	\$70	
Fred McKinley	59	67	126	\$45	
Rick Williams	63	66	129	\$35	
AM1					
Derek Libby	58	58	116	Trophy	
Kieran Nichols	58	60	118	Trophy	
Colin Vataha	58	60	118	Trophy	
Adv. Masters					
Mike Connell	64	62	126	Trophy	
Bob Enman	67	63	130	Trophy	
Chris "Tex" Long	67	63	130	Trophy	
AM Women					
Chrissy Trainor	74	76	150	Trophy	
Amanda Luszczycki	80	83	163	Trophy	
Elena Lippolis	86	81	167	Trophy	
AM2					
Jason Parker	65	64	129	Trophy	
Marc Gardner	66	63	129	Trophy	
Robert Brooks	66	67	133	Trophy	
Rec					
Jason Canders	70	71	141	Trophy	
Tyson Beale	71	72	146	Trophy	
Dan Hall	74	72	146	Trophy	

4/22/06		Sap Bucket Open IV			
Pro Open	RI	R2	Total	Prize	
Steve Brinster	49	46	95	\$130	
Matt Alberghini	51	53	104	\$95	
Steve Dodge	50	55	105	\$55	
Pro Masters					
Jim O'hara	54	54	108		
Tim Jiardini	56	57	113		
Rick Belhumeur	60	57	117		
Pro Women					
Lesli Demark	64	56	120		
AM1					
Tyler Cass	52	55	107		
David Jackson	59	58	117		
Doug Bechtel	60	58	118		

4/15/06		April Showers			
Pro Open	RI	R2	Total	Prize	
Kurt Waggoner	53	54	107	\$130	
Craig Cutler	55	57	112	\$78	
Doug Opiela	56	60	116	\$48	
Pro Masters					
Dave Coats	56	59	115	\$72	
Dave Johnson	62	65	127	\$36	
Kevin Rounds	60	67	127	\$36	
AM1					
Sam Castiglione	66	65	141	\$59	
Dustin Fournier	66	67	133	\$44	
Mike Stuart	67	67	134	\$30	
AM2					
Scott Selders	64	68	132	\$52	
Mike Baglione	71	63	134	\$46	
Fred Doot	68	69	137	\$37	
Adv Masters					
Sean Breslin	64	62	126	\$25	
Greg Kurtz	66	63	129	\$17	
Bob Goodwin	90	85	175		
AM Women					
Jen Pedham	76	78	154	\$38	
Wendy Courbat	85	79	164	\$24	
Sheri Jazembak	84	80	164	\$24	
Rec					
Gary	89	86	175	\$18	

Adv Masters					
Peter Tolvanen	53	56	109		
Greg Kurtz	55	61	116		
Michael Connell	59	59	118		
Adv Women					
Dawn Emory	66	71	137		
Katie Stansfield	78	72	150		
C. McLaughlin	77	76	153		
AM2					
Chris Webb	55	58	113		
Mike Andrews	61	59	120		
Ben Parker	64	60	124		
Rec					
Taylor Johnson	55	61	116		
Brandon Fenner	59	68	127		
James Sweat	63	67	130		

NEFA Results cont.

4/29/06		Pyramids 17			
Pro Open	RI	R2	Total	Prize	
Dr Doug Ertman	59	50	109	\$284	
Daniel Marcus	54	56	110	\$164	
Pete Johnson	58	54	112	\$92	
Pro Masters					
Doug Blighton	59	54	113	\$123	
Joshua Polur	62	52	114	\$57	
Doug Correa	60	54	114	\$5	
AM1					
Aaron Ala	62	52	114	167	
Kieth Baribeault	66	55	121	102	
John Mucciarone	65	57	122	78	
Adv Masters					
Mark Lyons	63	58	122	142	
Peter Tolvanen	67	57	124	82	
Chris "Tex" Long	69	55	128	54	
Adv Women					
Lu Rodriquez	109	98	207	20	
AM2					
Marielle Powell	64	58	122	142	
Jasin Bayer	67	57	124	82	
Clayton Davidson	73	55	128	54	

5/20/06	BAP Championships				
Pro Open	RI	R2	Total	Prize	
Pete Johnson	55	56	111	\$100	
Mike Dussault	58	54	112	\$50	
Daryl Cormier	58	55	113		
Pro Masters					
David White	61	59	120	\$50	
Rick Williams	67	65	132		
AM1					
Gary Ellsworth	58	59	117	Trophy	
Tyler Cass	58	59	117	Trophy	
Derek Libby	58	60	118	Trophy	
Adv Masters					
Mike Connell	64	60	124	Trophy	
Bob Enman	65	65	130	Trophy	
Mark Lyons	67	66	133	Trophy	
AM2					
Matt Kennedy	60	56	116	Trophy	
Robert Brooks	63	65	128	Trophy	
Tim Matusko	69	59	128	Trophy	
Rec					
Shaun Campbell	71	72	143	Trophy	
Jeremy Libby	77	69	146	Trophy	
Scott Griffin	87	86	173	Trophy	

5/6/06		Amesbury Pines Open		
Pro Open	RI	R2	Total	Prize
Matt Stroika	47	51	98	
Joe Yaskis	46	54	100	
Norm Fitzgerald	50	50	100	
Pro Masters				
Dan Griffith	49	55	104	
Tim Jiardini	51	54	105	
Roy Doar	52	54	106	
Am Masters				
Mark Lyons	52	51	103	
Rich Reilly	53	54	107	
Bill Stewart	50	58	108	
AM2				
Zach Stansfield	56	58	114	
Clayton Davidson	64	60	114	
Ben Kirby	59	58	117	
AM Women				
Joan Matteuzzi	55	57	112	
Linda Schnur	64	59	123	

5/27/06	Maple Hill One			
Pro Open	RI	R2	Total	Prize
B Cowperthwait	47	61	108	\$310
Sjur Soleng	54	55	109	\$205
Steve Brinster	50	60	110	\$160
Pro Masters				
Jim O'Hara	58	61	119	\$150
Bill Newman	56	67	123	\$100
Davis Johnson	57	67	124	\$70
AM1				
Todd Lapham	56	61	117	\$75
Derek Libby	53	69	122	\$65
Collin Vataha	54	71	125	\$60
AM2				
Jasin Bayer	58	70	128	\$65
Arty Graustein	57	76	133	\$58
Sean Healy	58	76	134	\$51
Adv Masters				
Mike Connell	57	71	128	\$65
John Hart	61	68	129	\$50
Markq Lyons	61	73	134	\$35

6/3/06 Dragan DGC				
Pro Open	RI	R2	Total	Prize
David Feldberg	49	50	99	\$600
Daryl Cormier	49	52	101	\$400
Mike Dussault	56	50	106	\$250
Pro Masters				
Kevin Rounds	52	60	112	\$100
Gordy Adell	56	56	112	\$60
Steve Hartwell	57	58	115	\$35
AM1				
Derek Libby	51	56	107	Trophy
Rodney Washburn	54	54	108	Trophy
Tyler Cass	49	59	108	Trophy
Adv Masters				
Rich Reilly	60	57	117	Trophy
John Hart	59	59	118	Trophy
Mike Connell	58	62	120	Trophy
Am Women				
Christie Reynolds	81	82	163	Trophy
Dawn Emory	82	95	177	Trophy
Rone Wright	86	95	181	Trophy
AM2				
Robert Brooks	55	58	113	Trophy
Matt Kennedy	61	61	122	Trophy
Tim Matusko	61	61	122	Trophy
Rec				
Joel Foster	69	59	128	
Shaun Campbell	65	64	129	

6/25/06 DND Championships				
Pro Open	RI	R2	Total	Prize
Daryl Cormier	49	52	101	\$60
Josh Connell	54	55	109	\$30
Scott Mallar	56	56	112	
AM1				
Joseph Pare	57	53	110	Trophy
Ben Dunlap	54	59	109	Trophy
Sean Stanton	57	59	116	Trophy
Am Masters				
Chris "Tex" Long	59	56	115	Trophy
Randy Dore	58	59	117	Trophy
Fred Gwartney	59	61	120	Trophy
Am Women				
Christie Reynolds	66	73	139	Trophy
AM2				
Tim Matusko	57	61	118	Trophy
Matt Kennedy	58	61	119	Trophy
Marielle Powell	62	58	120	Trophy
Rec				
Jeremy Joukins	74	80	154	Trophy
Steph Jacques	87	84	171	Trophy



NEFA Disc Golf Courses

Massachusetts (16)

Amesbury	Amesbury Town Park
Barnstable	Cape Cod Community College
Barre	Barre Falls Dam
Charlton	Buffumville Lake
Conway	The Highlands of Conway
Easton	Borderland State Park
Foxboro	Normandy Farms Campground
Leicester	Maple Hill
Leicester	Pyramids
Marstons Mills	Burgess Park
Northampton	Northampton State Hospital
Oak Bluffs	Riverhead Field
Princeton	Goodnow Park
Royalston	Tully Lake
Springfield	Springfield College
Topsfield	Pye Brook Park

Connecticut (8)

Fairfield	Fairfield University
Manchester	Wickham Park
N. Grosvenordale	West Thompson Lake
Norwalk	Cranbury Park
Orange	High Plains
Southington	Camp Sloper
Southington	Panthorn Park
Storrs	Collegiate Park

Rhode Island (3)

Charlestown	Ninigret Park
Newport	Miantonomi Park
North Smithfield	North Smithfield High School

Maine (20)

Auburn	Dragan Field	Bob Enman	207-786-4900
Augusta	Quarry Run	Fred McKinley	207-623-0859
Bangor	Gopher Ridge	Mark Hall	207-848-5850
Bowdoinham	Acker's Acres	Al Acker	207-737-4864
Brunswick	Enman Field	Bob Enman	207-798-5000
Caribou	Enman Riverside	Ryan Enman	207-455-5823
Dover-Foxcroft	Forrests Hill	Mike Martin	207-564-7683
Edgecomb	Basket Case Links	Kim Gray	207-882-4277
Fairfield	Quaker Hill Farm	Steve & Sarah LeBlanc	207-453-2013
Gorham	Bennett Paintball & Disc Golf	Merritt Bennett	207-839-9177
Limerick	Woodland Valley	Howard Burnham	207-793-2749
North Monmouth	Beaver Brook Camping Area	Jim Kent	207-933-2108
Sabattus	Sabattus Disc Golf	Dave Enman	207-375-4990
Saco	Boom Field	Robert Brooks	207-777-1613
Sidney	D 'N D Disc Golf	Tammy Tillson	207-547-4612
Skowhegan	Eaton Mt. Ski Area	Gene Kent	207-474-2666
South Paris	Creative Recreations	Andrew Shaskan	207-890-0897
Trenton	Hapana	Ike Robbins	207-326-8993
Turner	Cranberry Valley	Ricker Hill Orchards	207-225-3455
Vassalboro	Burnsboro	Rick Burns	207-623-4017
West Gardiner	Grasseyland	Bob Grasse	207-582-4935

Contact

Dan Ouellet	978-835-4655
Lev Malakhoff	508-771-4619
Jason Southwick	508-792-2764
David Stiddem	508-791-9094
Dave Balkema	413-369-4718
Rich Gunther	508-222-8728
Campground	508-543-7600
Steve Dodge	508-421-6621
Jason Southwick	508-792-2764
Lev Malakhoff	508-771-4619
Jason Johnson	413-320-3386
Seamus Scanlon	508-627-3070
Steve Correa	508-351-9801
James West	978-249-9150
Dave Johnson	413-596-5966
Bill "Stew" Stewart	978-887-3406

Phone

New Hampshire (3)

Barnstead	The Woods at Beauty Hill
Center Ossipee	Terrace Pines Campground
Dover	Bellamy Park

Vermont (8)

Bennington	Willow Park
Bolton	Bolton Valley Resort
Bradford	Oxbow High School
Jay	First Trax DGC
Johnson	Johnson State College
North Calais	North Calais DGC
Randolph	White River DGC
Waterbury	Hope A. Davey Park

New York (5)

Brooklyn	Prospect Park
Mt. Kisco	Leonard Park
Saratoga Springs	Hyzer Creek
Warwick	Warwick Town Park
Yorktown Heights	FDR Park

New Jersey (2)

Mahwah	Campgaw Reservation
West Milford	Buzzy's Creek

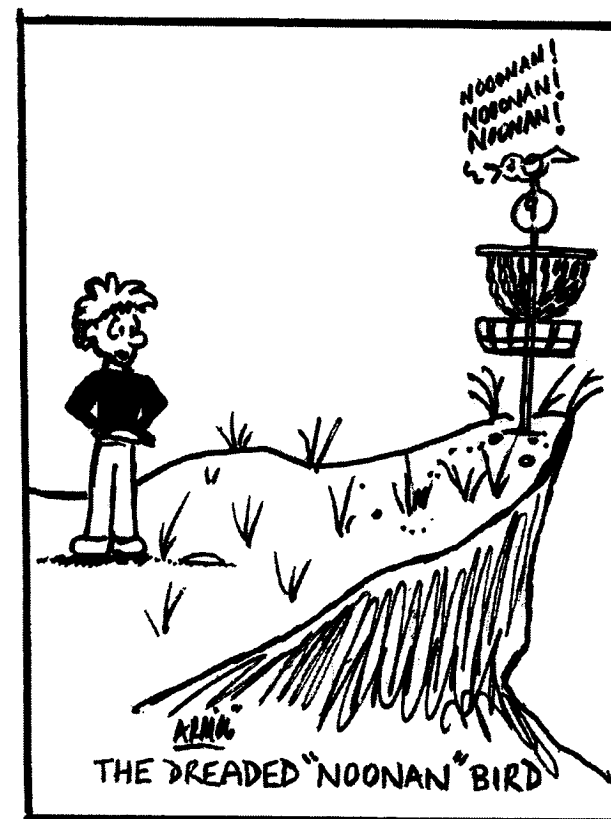
Lisa Prizio	603-724-4027
Mark Wright	603-539-6210
Dennis Grzywacz	603-493-2695

Rick Stewart	802-434-6871
Ric Timmons	802-234-6802
Don Ellis	802-326-3073
Eamon O'Shea	802-326-3130
Paul Olander	802-456-7465
Ric Timmons	802-234-6802
Jesse Wing	802-244-0838

David "Mel" Meltzer	718-965-8581
Daver Coats	914-672-9378
Morgan Wright	917-703-7979
Dan Doyle	845-987-9909
Bill Newman	914-666-6593

Dan Doyle	845-987-9909
Dave Roach	973-839-3151

GAIRLOCK



THE DREADED "NOONAN" BIRD

Current NEFA Points Standings

Rank	Pro Open Name	Top 6	TOTAL
1	Cormier, Daryl	104.8 101.6 94.74 92.86 92.86 73.68	560.535
2	Walsh, Tim	106 103.6 86.84 86.67 83.33 80.56	546.998
3	Marcus, Daniel	107.6 94.74 91.67 91.67 80 75	540.67
4	Brinster, Steve	107.2 107.2 106.4 106.4 90 0	517.2
5	Johnson, Pete	102 88.89 86.84 81.25 81.25 71.43	511.66
6	Waggoner, Kurt	104.4 78.95 68.75 68.75 58.33 58.33	437.515
7	Connell, Josh	88.89 75 66.67 65.79 57.14 57.14	410.631
8	Sanderson, Brent	82.14 82.14 66 65.79 43.33 39.47	378.883

Rank	Pro Women Name	Top 4	TOTAL
1	Lesli Demark	100.4 100.4 100.4 100.4	401.6

Rank	Pro Masters Name	Top 5	TOTAL
1	Jiardini, Tim	102 88.89 88.89 88.89 85.71	454.381
2	Adell, Gordy	102 100.4 87.5 87.5 50	427.4
3	Belhumeur, Rick	100.4 71.43 69.23 66.67 62.5	370.226
4	Newman, Bill	92.31 77.78 77.78 77.27 0	325.136
5	Hartwell, Steve	75 75 70 66.67 27.78	314.445
6	Jones, Dave	104.4 103.6 103.6 0 0	311.6
7	O'Hara, Jim	105.2 102.8 102.4 0 0	310.4
8	Mattioli, Mike	66.67 66.67 59.09 53.33 50	295.759

Rank	AM1 Name	Top 5	TOTAL
1	Libby, Derek	110.8 110.8 108.4 108.4 107.6	546
2	Cass, Tyler	109.2 109.2 92.86 92.86 90	494.114
3	Carrieri, Jesse	112.4 106 87.1 68.52 68.52	442.534
4	Dunlap, Ben	96.77 84.21 83.33 70 66.67	400.984
5	Chipchase, Michael	112.4 93.55 85.19 85.19 0	376.319
6	Zelinski, Joshua	82.26 79.63 79.63 76.09 52.38	369.986
7	Ala, Aaron	110.8 92.86 88.71 74.19 0	366.561
8	Ditter, Stephen	95.16 94.44 94.44 56.52 18.52	359.091

Rank	AM2 Name	Top 4	TOTAL
1	Powell, Marielle	108 88.24 83.33 83.33	362.902
2	Bayer, Jasin	107.2 95 80 80	362.2
3	Graustein, Arthur	104.4 94.44 82.5 72.22	353.567
4	Doot, Frederick	93.33 93.33 86.67 80	353.333
5	Davidson, Clayton	92.31 90 83.33 80	345.641
6	Andrews, Mike	93.33 93.33 70 61.54	318.205
7	Parker, Jason	104.8 77.78 66.67 44.44	293.688
8	Smolin, Craig	80 80 62.5 52.78	275.278

Rank	AM Women Name	Top 3	TOTAL
1	Helseth, Jeannie	101.2 101.2 100.8	303.2
2	Emory, Dawn	103.2 103.2 75	281.4
3	Blanch, Michelle	101.2 101.2 0	202.4
4	Southwick, Kelly	66.67 16.67 0	83.333
5	Wanerling, Laura	33.33 33.33 0	66.666

Rank	AM Masters Name	Top 5	TOTAL
1	Connell, Mike	103.6 102.8 102.8 102 91.67	502.867
2	Hart, John	104.8 104.8 91.67 91.67 88.89	481.822
3	Lyons, Mark	106 103.2 102.8 77.78 60	449.778
4	Kurtz, Greg	90.91 90.91 83.33 83.33 83.33	431.818
5	Reilly, Rich	104.8 104.8 93.33 64.29 41.67	408.886
6	Tolvanen, Peter	104.4 104.4 85.71 54.17 54.17	402.848
7	Long, Chris "Tex"	102.8 78.57 72.73 72.73 71.43	398.255
8	Enman, Bob	80 78.57 70.83 64.29 64.29	357.976

Upcoming Events

Date	Event	Location	Contact
Aug-6	Cranberry Valley Championships (PDGA-D)(NEFA Pts)(MCS)	Cranberry Valley Turner, ME	Ricker Hill Orchard 207-225-3455
12-Aug	Terrance Pines Open (NEFA Pts)	Center Ossipee, NH Terrance Pines	Chris "Tex" Long
12-Aug	Disc Golf Jam	Vassalboro, ME Burnsboro	Greg Hinkley 207-968-3329
19-Aug	Pokerpalooza (NEFA 2x Pts)	Easton, MA Borderland State Park	Rob Tatso rtatso@mac.com
19-Aug	Riverside Championships (MCS)	Caribou, ME Enman Riverside	Ryan Enman 207-455-5823
Aug-26/27	Marshall St. Championship	Leicester MA Pyramids & Maple Hill	Jason Southwick 508-792-2764
27-Aug	Disc Golf / Bowling Challenge	Brunswick, ME Enman Field	Enman Field 207-798-5000
2-Sep	Pilots' Only Doubles	Brunswick, ME Enman Field	Enman Field 207-798-5000
3-Sep	Pilots' Only Singles	Brunswick, ME Enman Field	Enman Field 207-798-5000
9-Sep	Fairfield Open (PDGA-C)(NEFA Pts)	Fairfield, CT Fairfield University	Kraig Steffen 203-258-1510
9-Sep	Beaver Brook Championships (MCS)	N. Monmouth, ME Beaver Brook Cmpgd	Jim Kent camp@beaver-brook.com
16-Sep	New Hampshire States (NEFA 2x Pts)	Rindge, NH Hunt's Mean 18	John Hart 978-249-3223
23-Sep	CT States (NEFA Pts)	Norwalk, CT Cranbury Park	Adam Fasciolo
23-Sep	Last Call Championships (MCS)	Brunswick, ME Enman Field	Enman Field 207-798-5000
30-Sep	NEFA Points Finals	Easton, MA Borderland State Park	John Hart 978-249-3223
Oct-7/8	Animalfest	Warwick, NY Warwick Town Park	Jeannie Helseth 845-987-9110
7-Oct	Burnsboro Doubles Championship	Vassalboro, ME Burnsboro	Greg Hinkley 207-968-3329
14-Oct	Cranbury Classic Triples	Norwalk, CT Cranbury Park	Ryan Brunelle discgolfer17@charter.net
21-Oct	Bog Dragon Doubles	Turner, ME Cranberry Valley Auburn, ME Dragan Field	Dragan Field 207-786-4900
21-Oct	Battle of Saratoga (PDGA)	Saratoga, NY Hyzer Creek	Morgan Wright hyzercreek@yahoo.com
Oct-28/29	Maine Championship Finals (MCS)	Gorham, ME BAP Disc Golf	Bob Enman enman@blazenetme.net
5-Nov	Double-Barreled Dragon Doubles	Gorham, ME BAP Disc Golf Auburn, ME Dragan Field	Dragan Field 207-786-4900
12-Nov	Thorndike Triple Cup	Auburn, ME Dragan Field	Dragan Field 207-786-4900
25-Nov	Greater Burnsboro Open	Vassalboro, ME Burnsboro	Greg Hinkley 207-968-3329
9-Dec	Christmas Party	Auburn, ME Dragan Field	Dragan Field 207-786-4900